

“Statuskonferenz ADHS”

Berlin, 08./09. Dezember 2014

ADHS Pharmakotherapie:

Verschreibungsraten, Versorgungsraten, Entwicklung

ADHD Pharmacotherapy: Prescription Rates, Utilization, Trends

Michael Schlander,

Oliver Schwarz, Götz-Erik Trott, and Tobias Banaschewski

University of Heidelberg

Heilbronn University

University of Würzburg

and

Institute for Innovation & Valuation in Health Care (INNOVAL^{HC})

University of Heidelberg & University of Applied Economic Sciences Ludwigshafen



BACKGROUND

Map of Nordbaden



Nordbaden

- The **demographic structure** (by age and gender) of the Nordbaden sample (including its vdek subgroup, available for prescription analyses) compares well to the national population.
- However, regional **population density** is much higher (396/sqkm versus 229/sqkm in 2009), and GDP per capita (34,800€ versus 29,300€) as well as the rate of persons insured by private sick funds (instead of SHI: 18.2% versus 14.6%) exceed the national average.
- There are also relatively more **health care specialists** in Nordbaden (for example, 11,400 persons per mental health care specialist and 3,200 per psychotherapist) compared to Germany (17,200 and 3,900, respectively), whereas the relative number of general practitioners in the region is somewhat lower (with 1,500 persons per g.p. versus 1,400).
- **The Nordbaden sample constitutes a well-characterized study population.**
- **Interpretation of observations** should take into account the well-documented differences between region and nation.

Project Design

Population

- Population
 - 2.238m persons covered by Statutory Health Insurance (SHI)
 - Full coverage of the regional SHI insured population (all physician and psychotherapist claims data from KV)
 - Representing ~82% of the total population in Nordbaden
 - Sample representing ~3% of the total population of Germany
 - Integrating prescription claims data from a major association of sick funds (VdAK / vdek)

Retrospective Claims Database Analysis

Case Control Technique

- Case Control Technique
 - Matched pairs (by age, gender, type of health insurance)
 - For examination of co-morbidity, utilization, and costs

Phase I: Cross-Sectional Study

- Phase I: Cross-Sectional Study
 - Integrating patient-related data from four quarters of 2003

Project Design

Phase II: Longitudinal Study

- **Full coverage** of the regional SHI insured population over seven years (all physician and psychotherapist claims data from KV, 2003-2009)
- Database representing ~**82%** of the total population in Nordbaden, i.e., approximately **3%** of the total population of Germany
- Integrating prescription claims data (available for years **2003, 2006, 2007, 2008, and 2009**) from a major association of sick funds (VdAK / vdek)
- **Matched pairs** technique (by age, gender, type of health insurance)
- Capturing **all** regional contacts with health care providers from Q1 2003 through Q4 2009, following up identified persons (patients and controls) throughout the full study period
- Examination of **trends** in prevalence, co-morbidity, utilization, costs
- Longitudinal analyses, such as duration of treatment, as a function of severity, comorbidity, type of index treatment

BACKGROUND

Nordbaden Database Characteristics

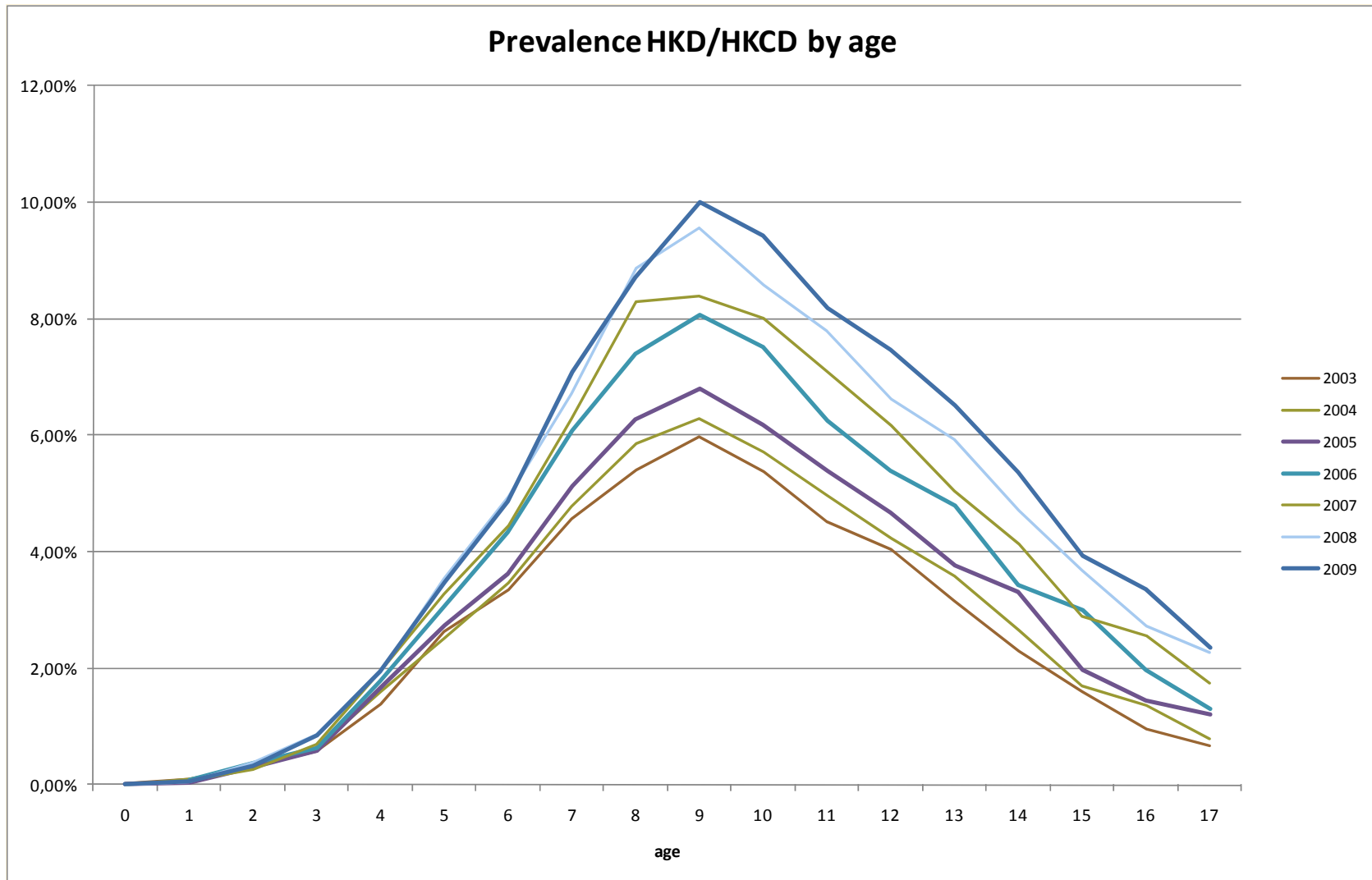
Number of ADHD Patients in Database

Age [Years]					
Year	0-5	6-12	13-17	≥18	Total
2003	1,134	7,815	2,157	781	11,887
2004	1,121	8,198	2,557	996	12,872
2005	1,135	8,704	2,986	1,296	14,121
2006	1,220	10,112	3,644	1,755	16,731
2007	1,242	10,797	4,047	2,173	18,259
2008	1,313	11,588	4,658	2,535	20,094
2009	1,263	11,905	5,049	3,070	21,287

ADHD IN NORDBADEN

Administrative Prevalence

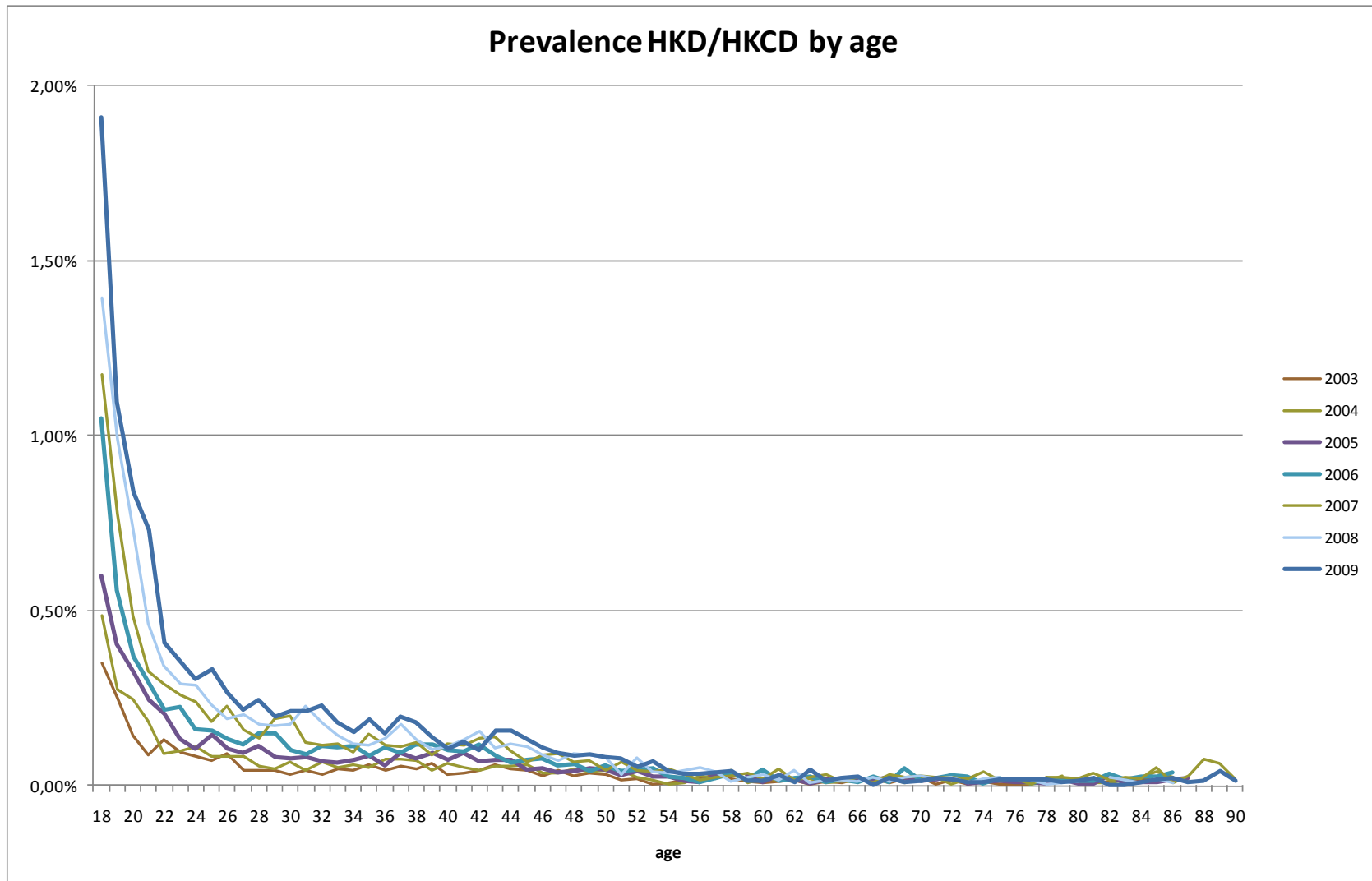
ADHD in Children and Adolescents, 2003-2009



ADHD IN NORDBADEN

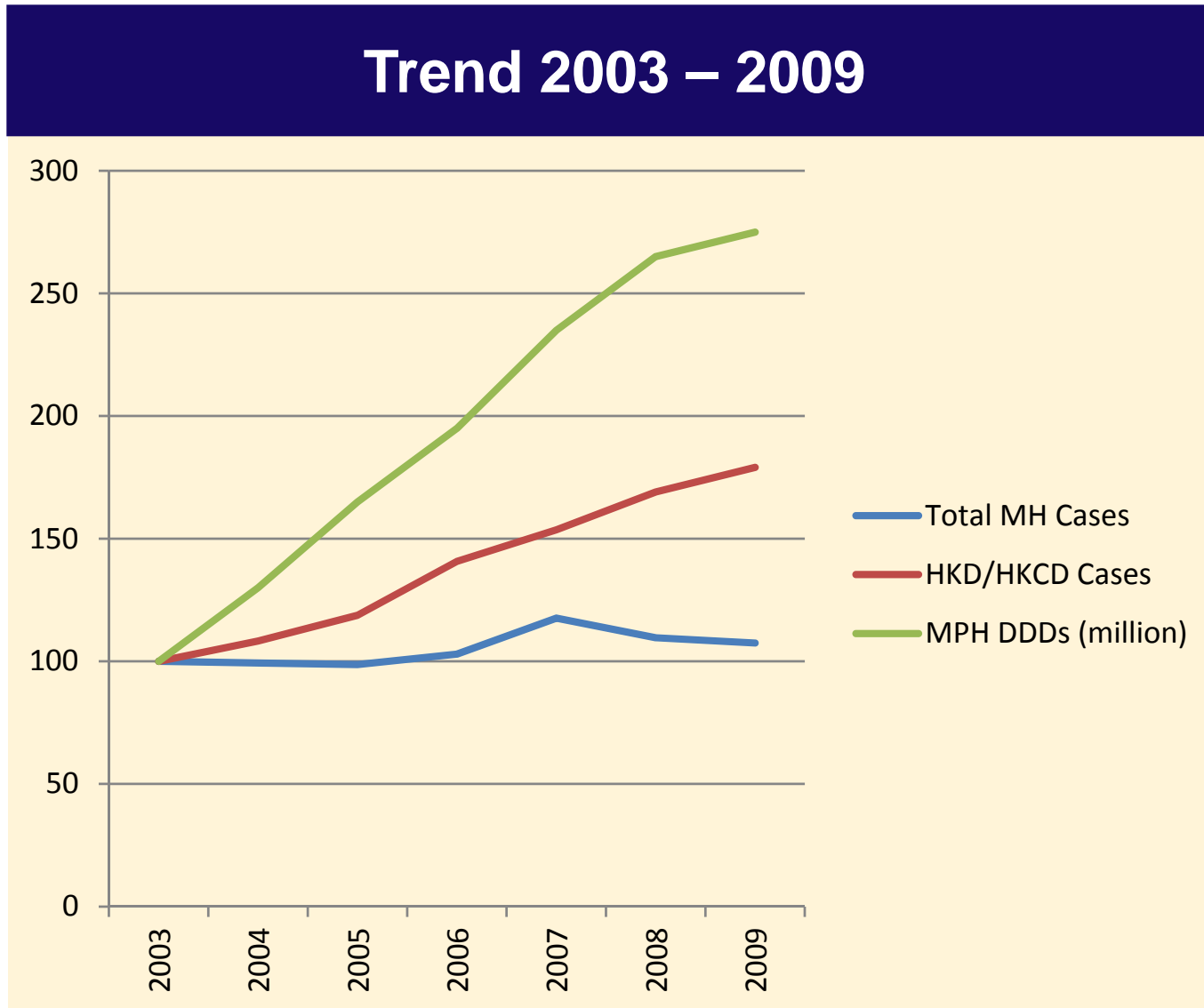
Administrative Prevalence

ADHD in Adults, 2003-2009



CONTEXT

Mental and Behavioral Health Disorder (“MH”) Diagnoses, ADHD (“HKD/HKCD”) Case Numbers, and Methylphenidate (“MPH”) Prescriptions

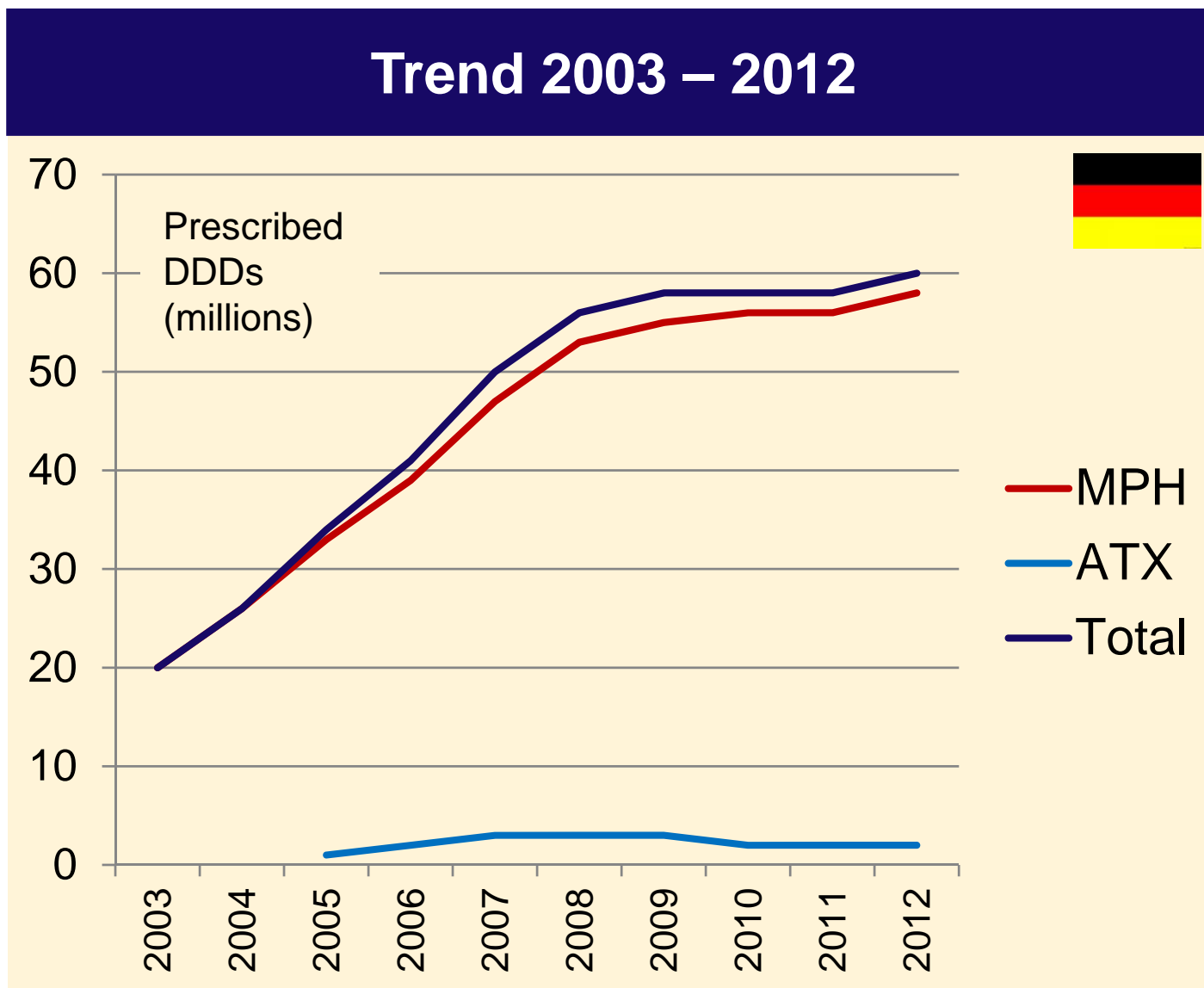


¹Data sources: absolute MH and HKD/HKCD case numbers, Nordbaden project; methylphenidate prescribed defined daily doses (MPH DDDs), U. Schwabe and D. Paffrath (2012)

“ADHS Statuskonferenz” 2014

CONTEXT

Prescriptions of Drugs Licensed for Treatment of ADHD in Germany¹

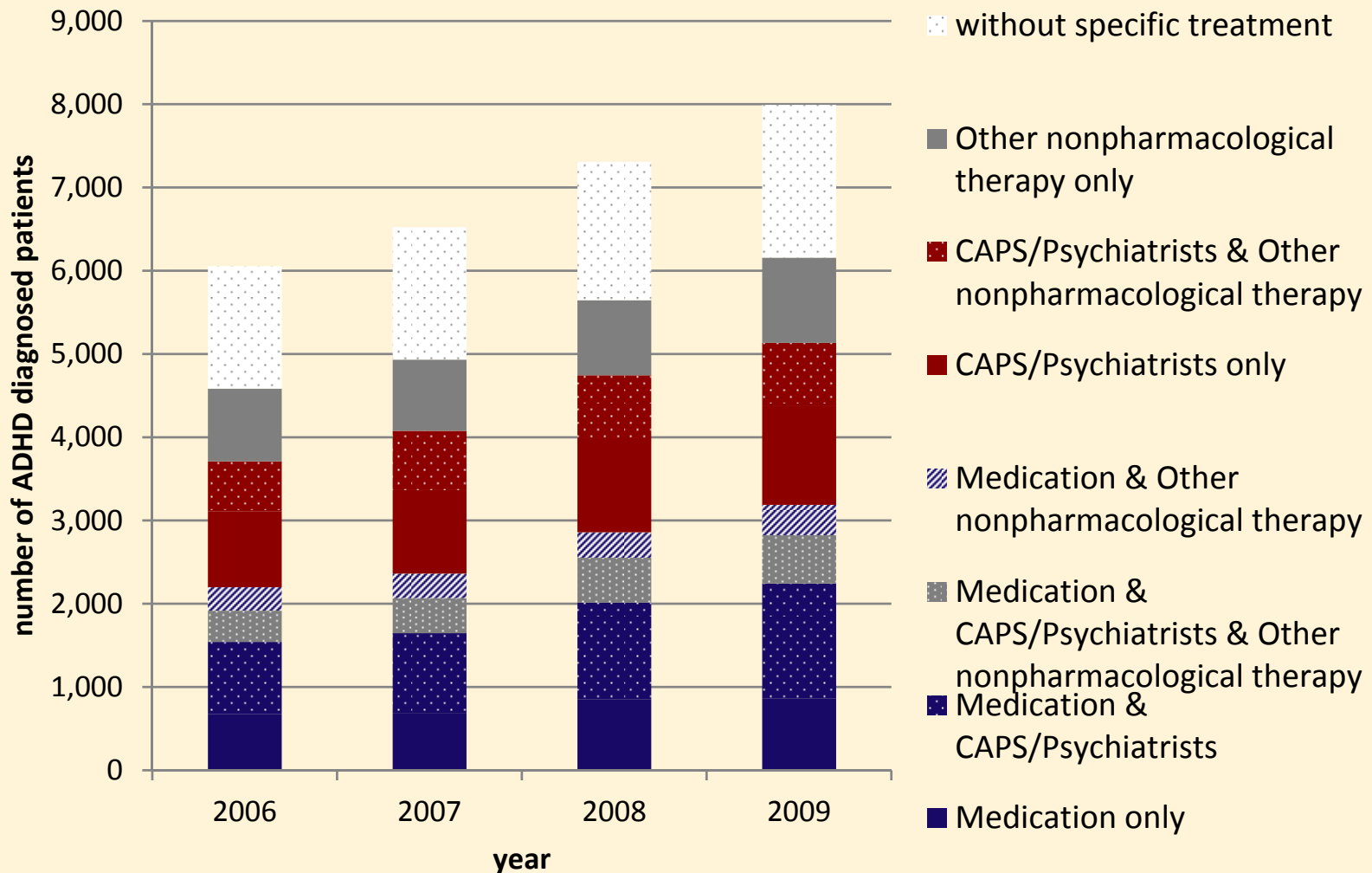


¹Data source: U. Schwabe and D. Paffrath (2013)

ADHD IN NORDBADEN

Therapeutic Management of Patients with ADHD

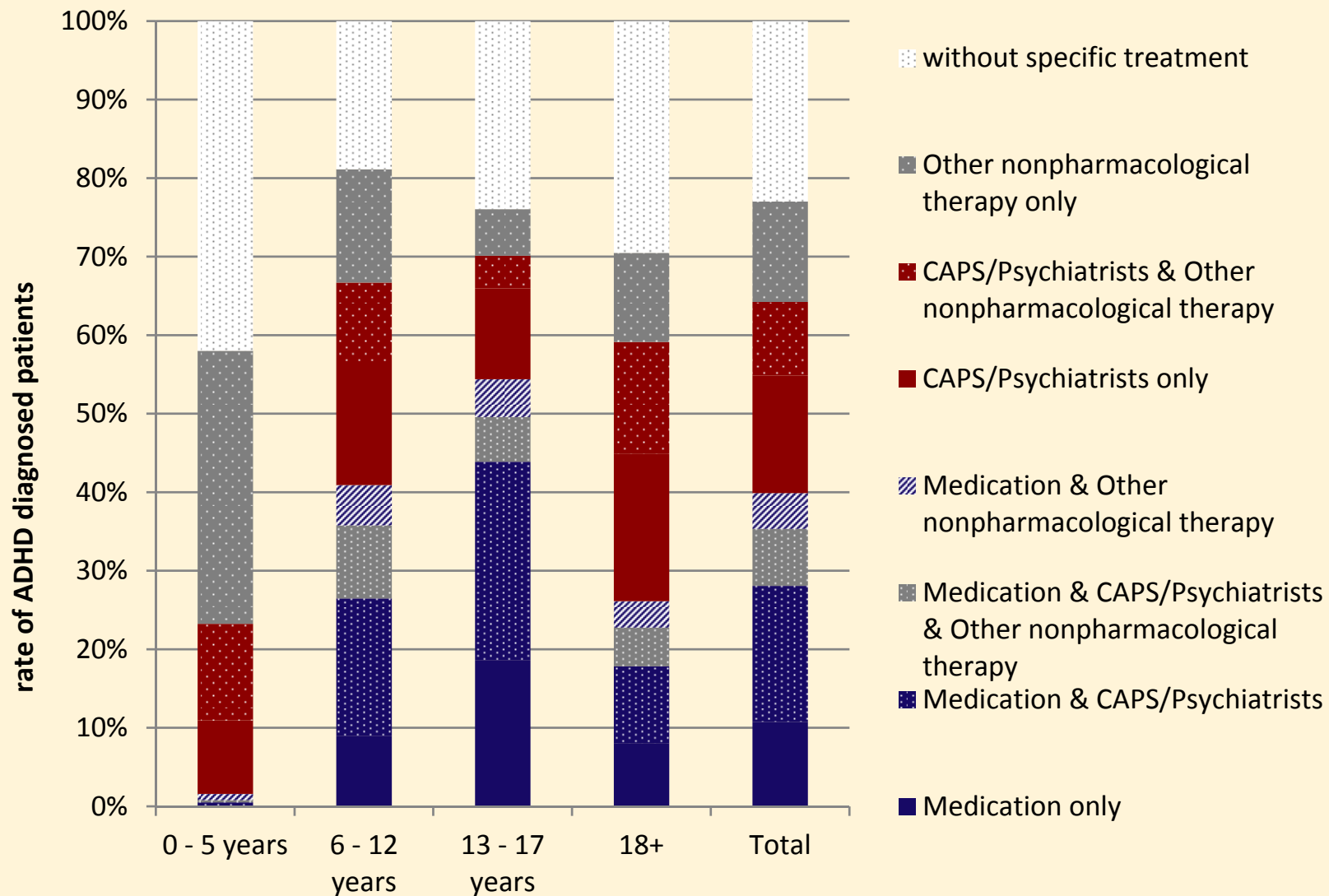
Types of Service Utilized, 2006-2009



ADHD IN NORDBADEN

Therapeutic Management of Patients with ADHD

Types of Service Utilized (by Age Group), Year 2009



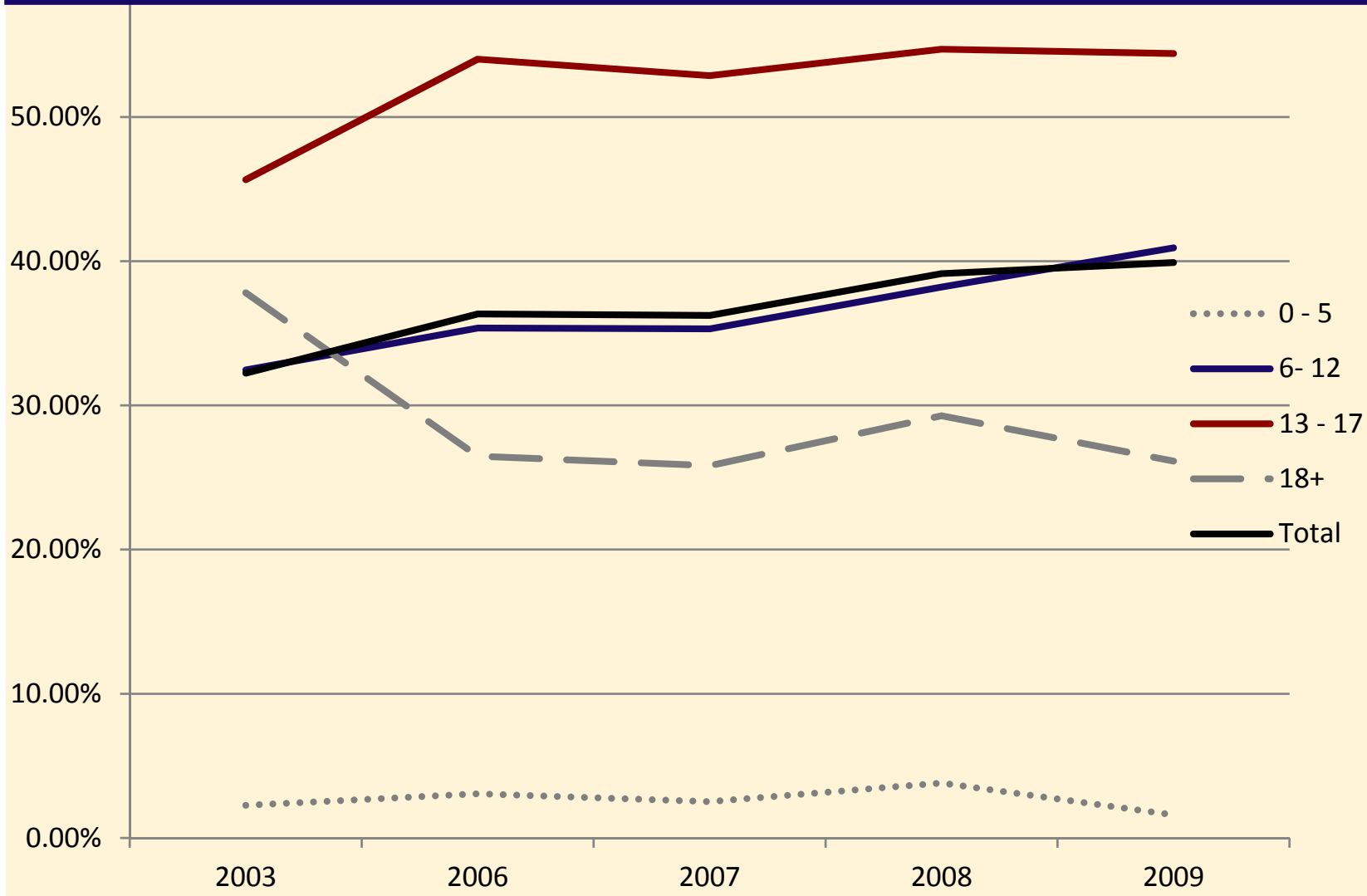
© INNOVAL^{HC}, Prof. Dr. Michael Schlander et al., Wiesbaden / Germany, and Berlin, Germany, December 08/09, 2014



ADHD IN NORDBADEN

Therapeutic Management of Patients with ADHD

Medication Management (by Age Group and Year)



Patients with at least one prescription of ADHD medication as rate of patients with ADHD diagnosis in age group.

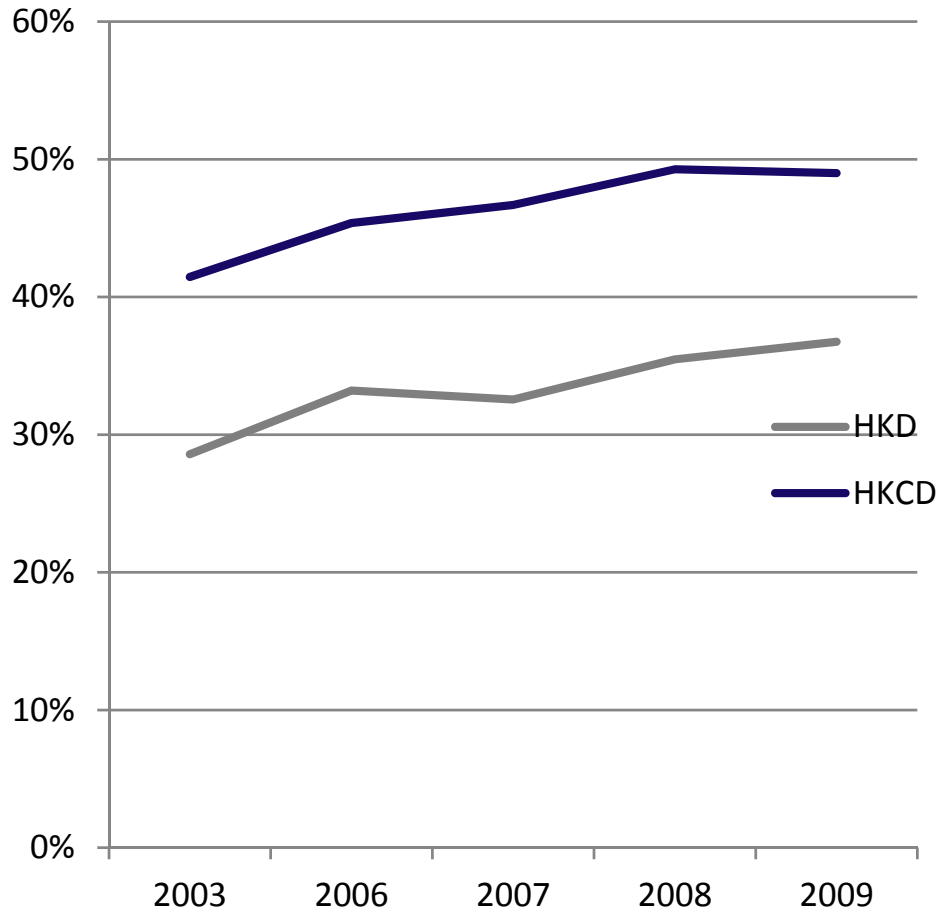
“ADHS Statuskonferenz” 2014



ADHD IN NORDBADEN

Therapeutic Management of Patients with ADHD

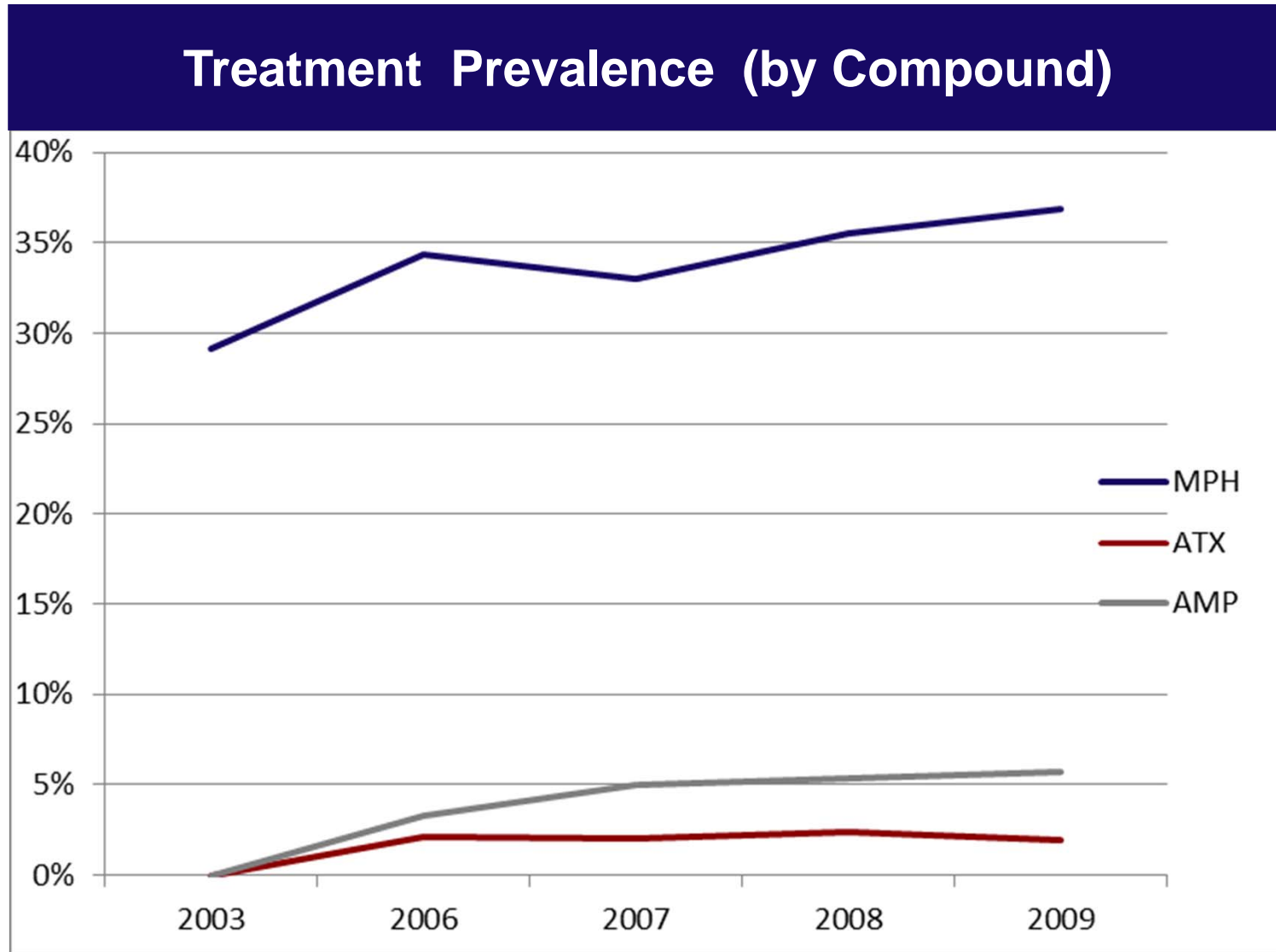
Treatment Prevalence (Medication)



Patients with at least one prescription of ADHD medication as rate of patients with ADHD diagnosis in age group.

ADHD IN NORDBADEN

Therapeutic Management of Patients with ADHD



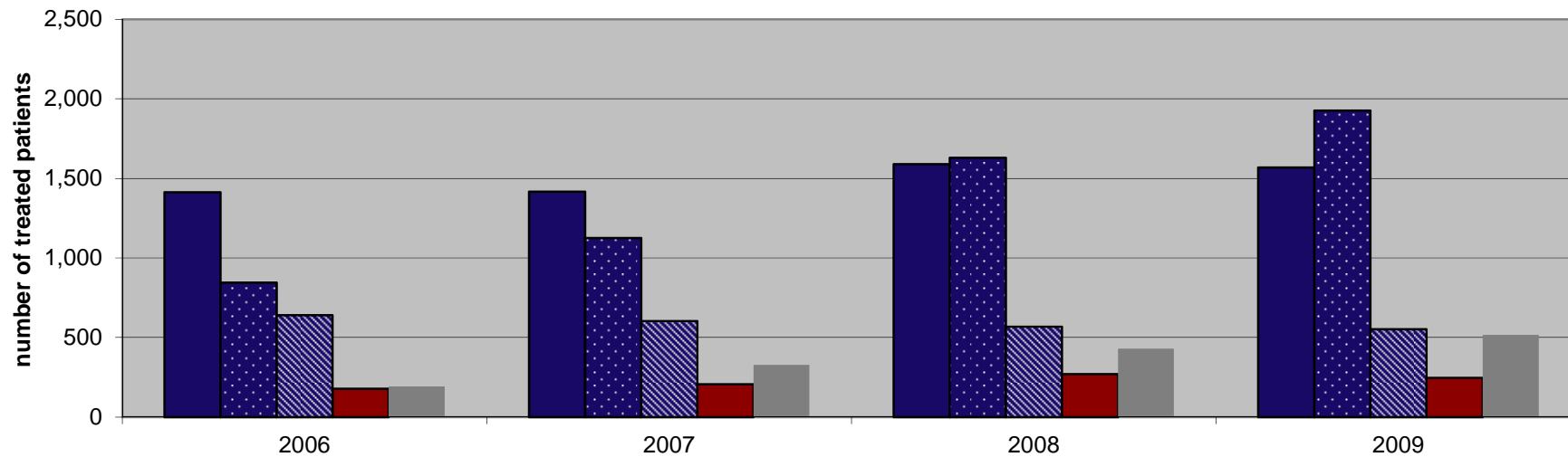
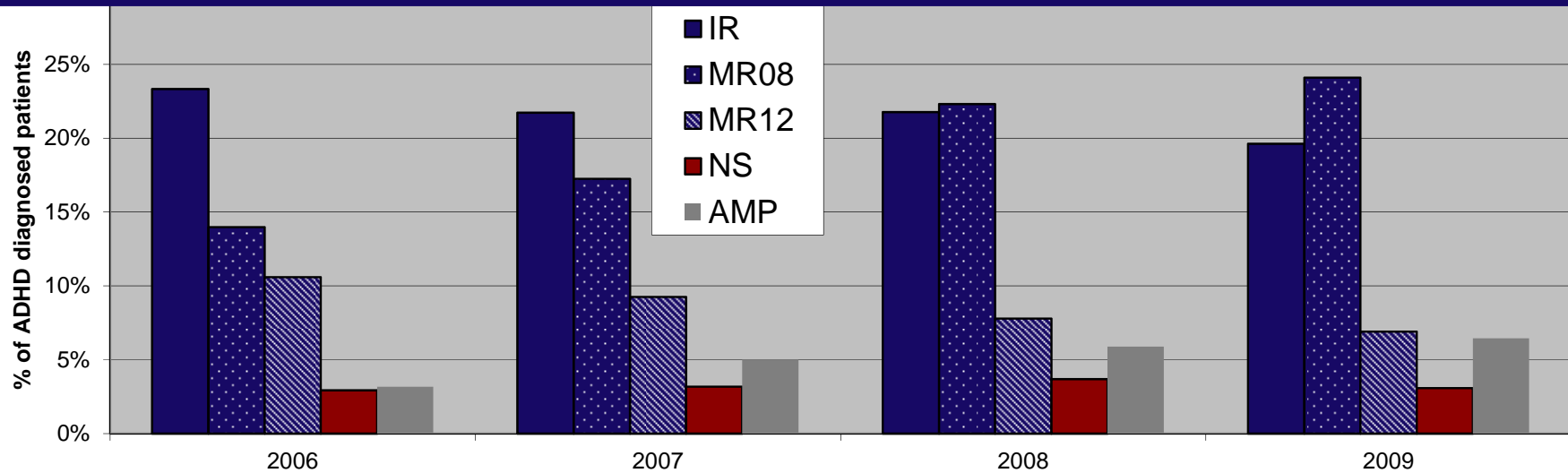
Patients with at least one prescription of ADHD medication as rate of patients with ADHD diagnosis in age group.

“ADHS Statuskonferenz” 2014

ADHD IN NORDBADEN

Therapeutic Management of Patients with ADHD

Treatment Prevalence (by Class of Drug and Year)

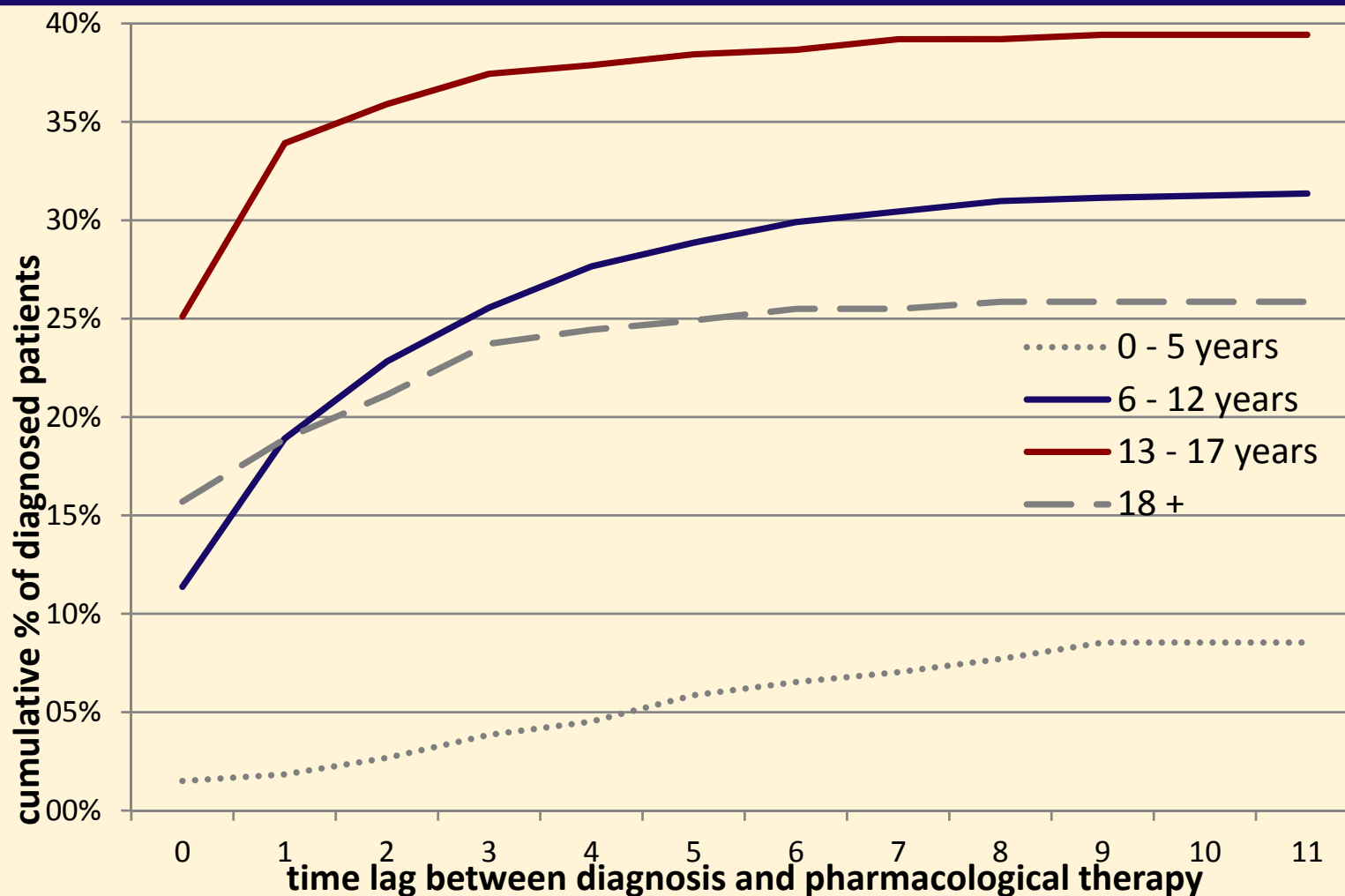


Patients with at least one prescription of ADHD medication as rate of patients with ADHD diagnosis in age group.

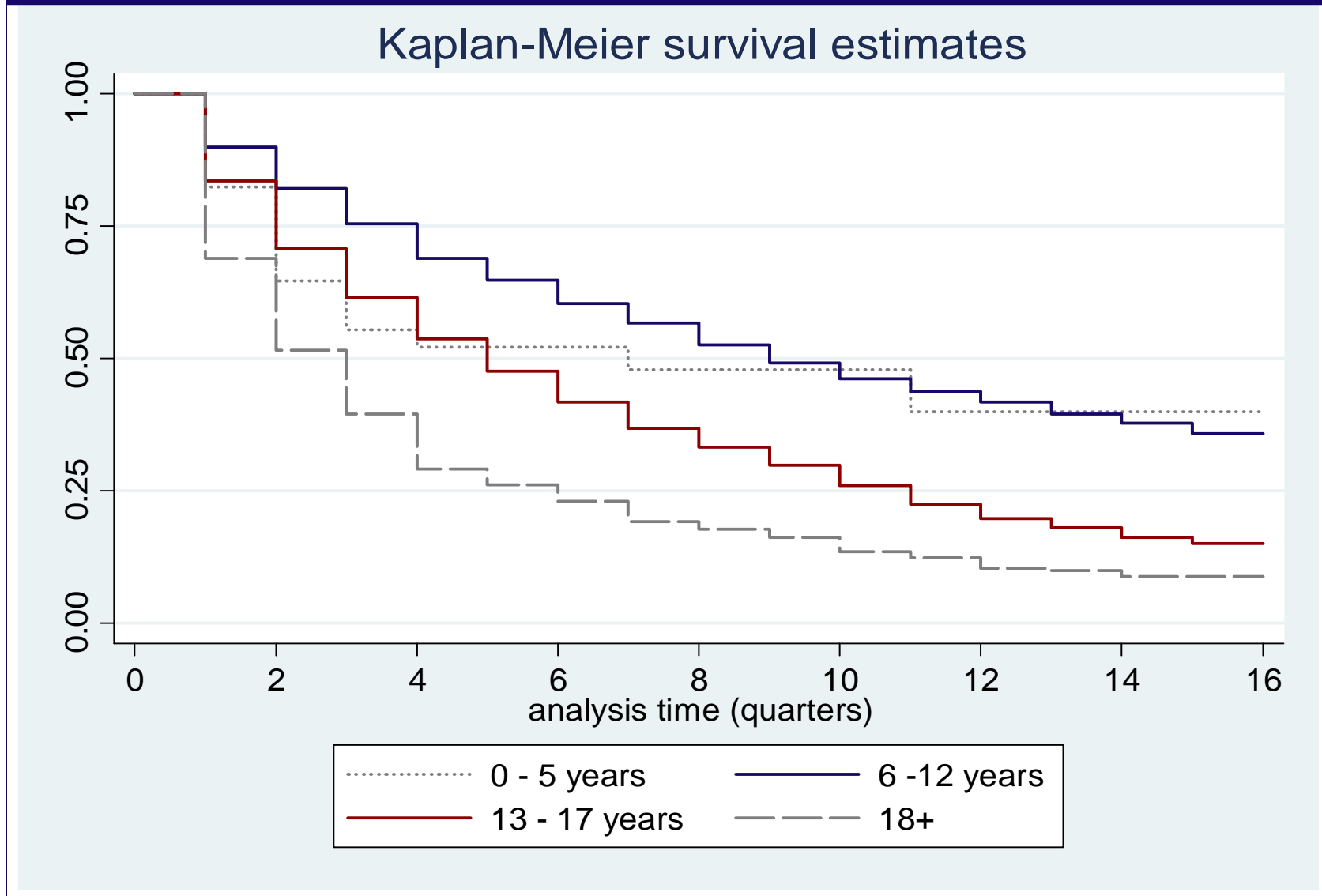


Therapeutic Management of Patients with ADHD

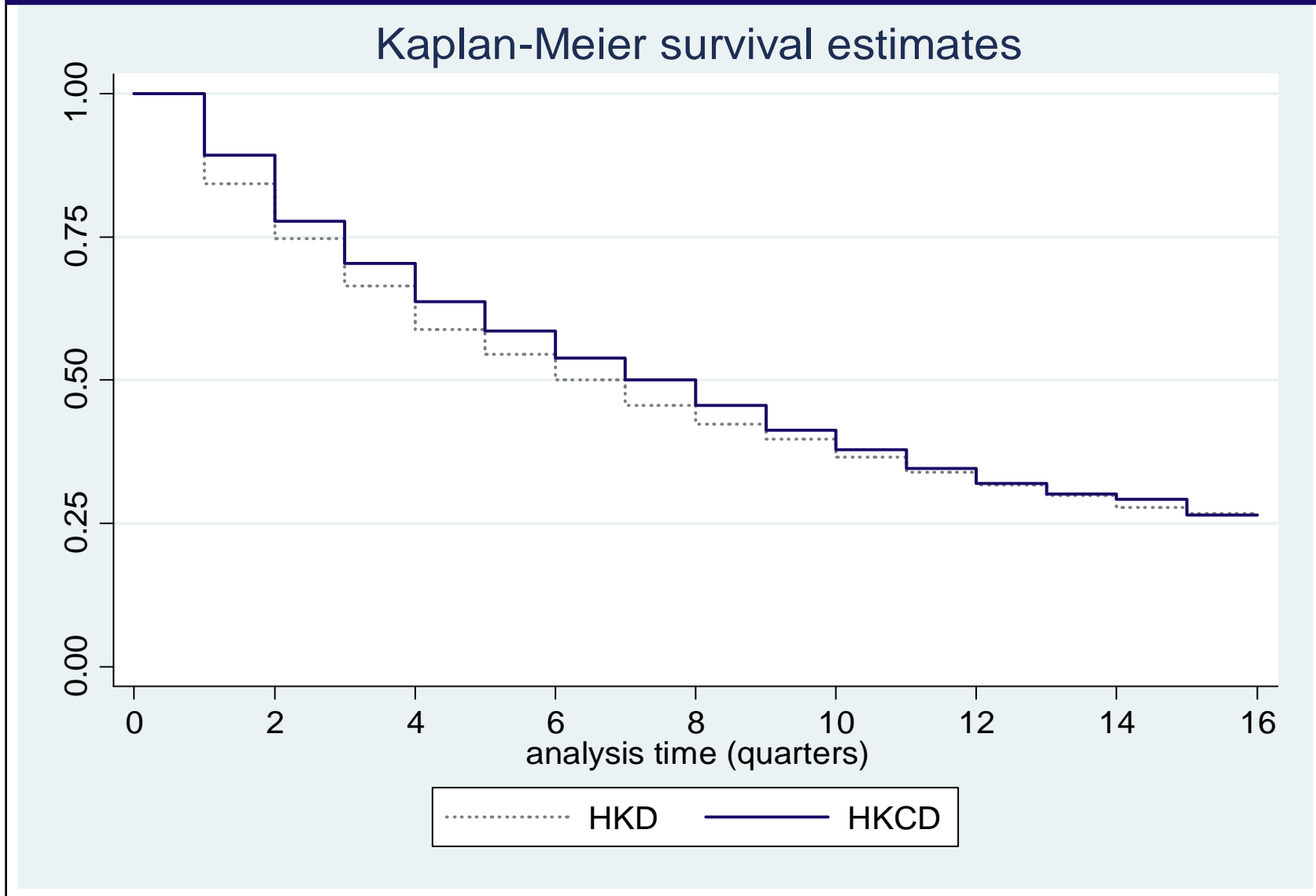
Time from Diagnosis to Initiation of Medication



Analysis of Treatment Duration (Medication)

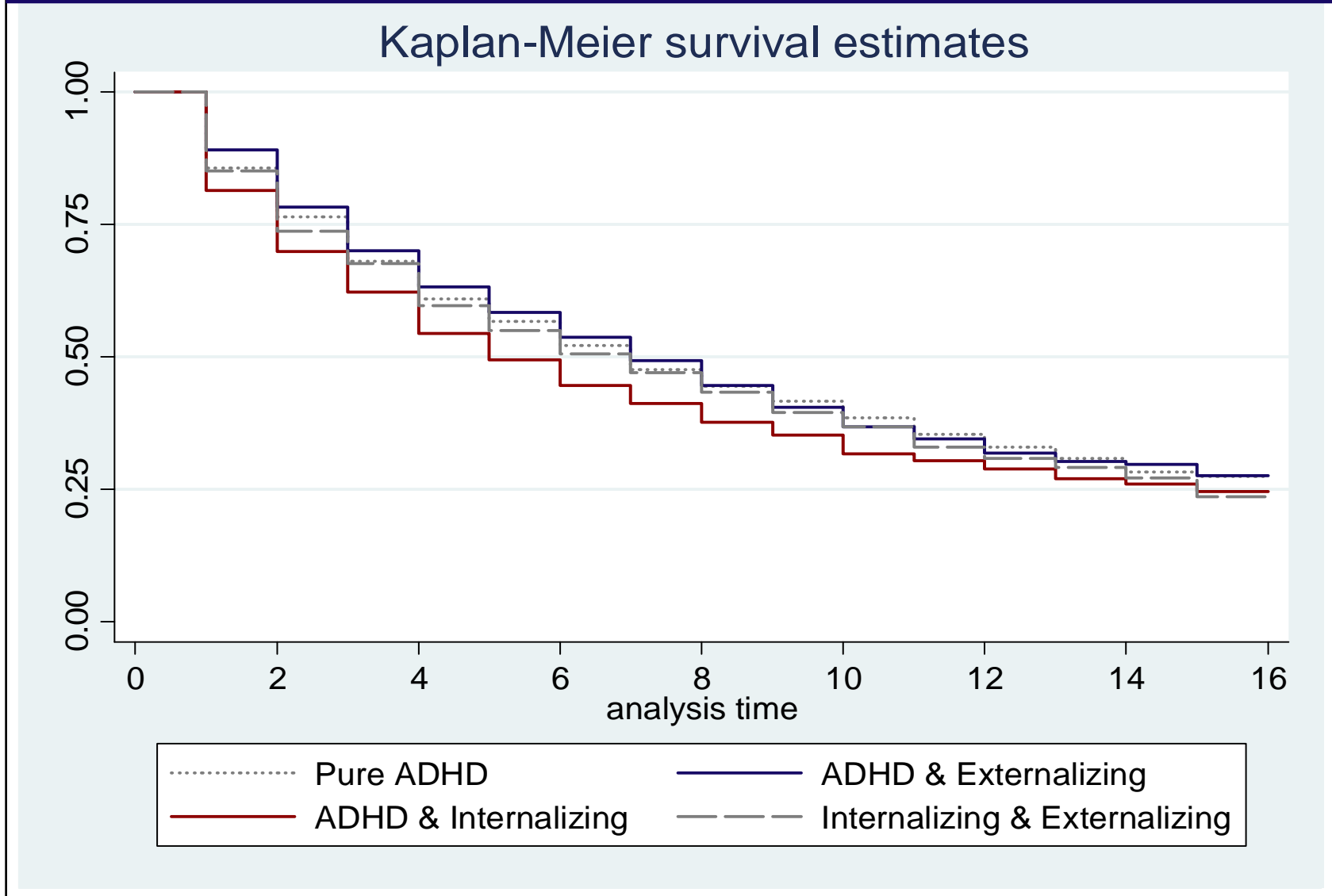


Analysis of Treatment Duration (Medication)

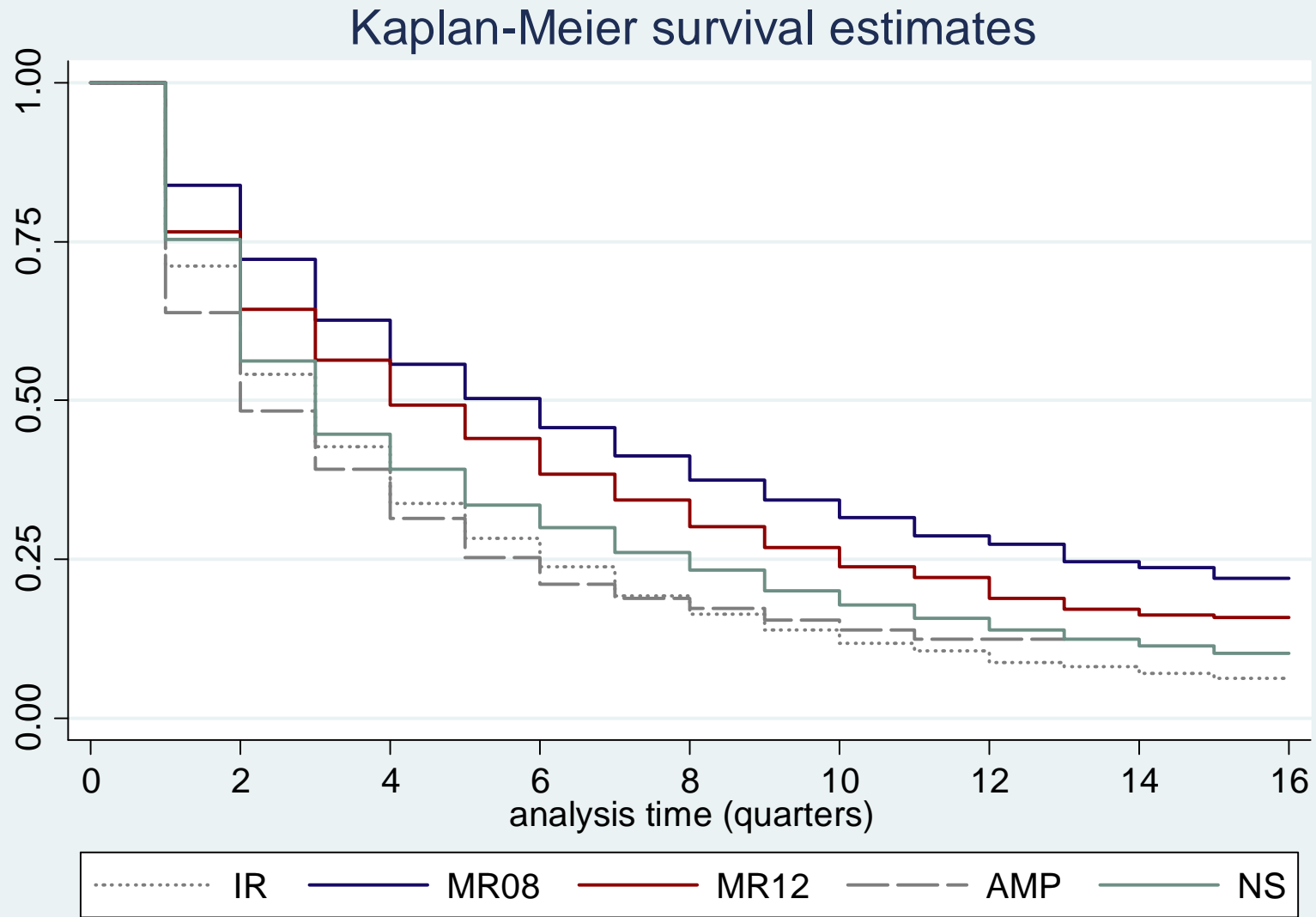


Therapeutic Management of Patients with ADHD

Analysis of Treatment Duration (Medication)



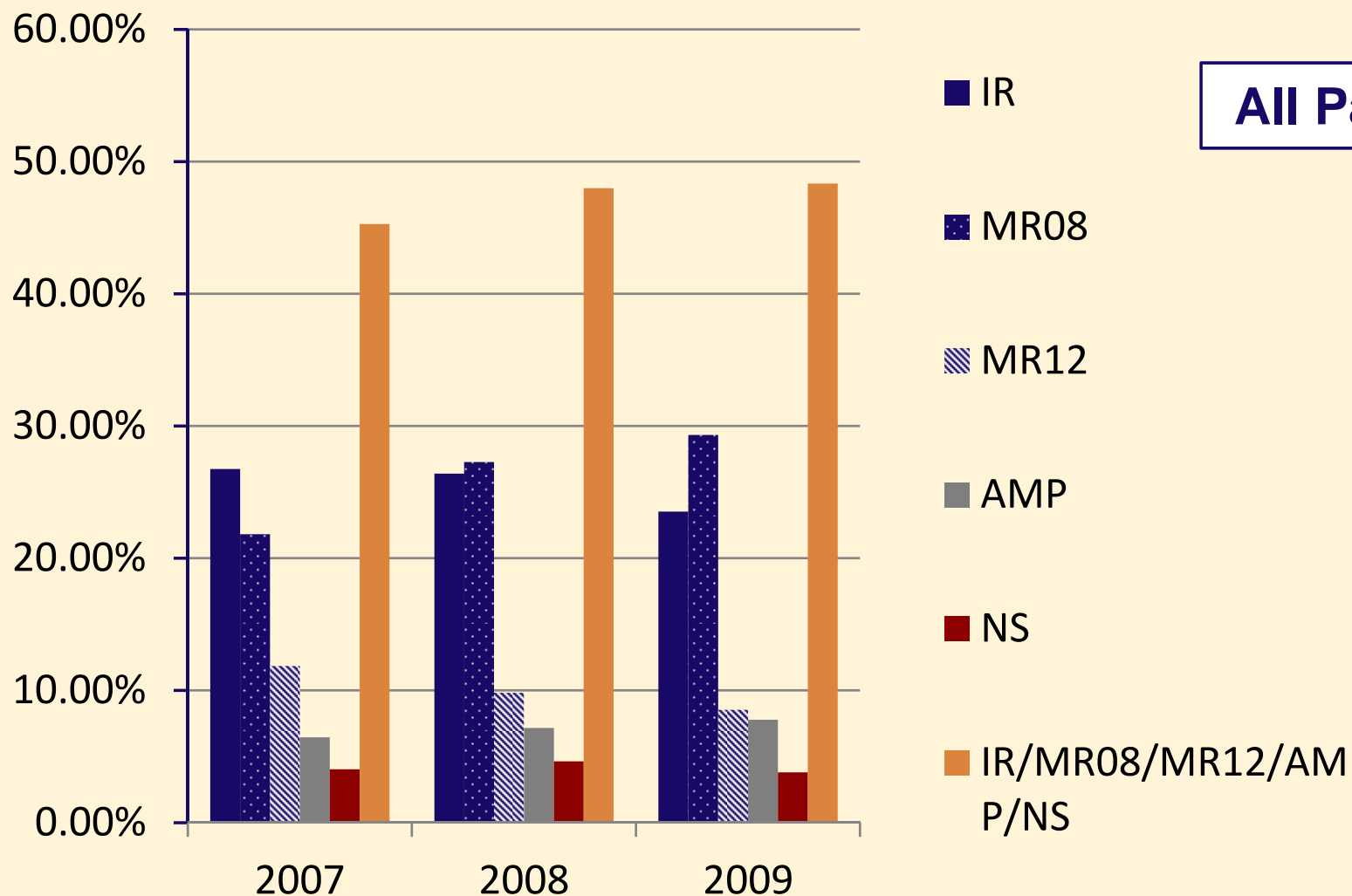
Duration of Drug Therapy by Class of Medication



ADHD IN NORDBADEN

Therapeutic Management of Patients with ADHD

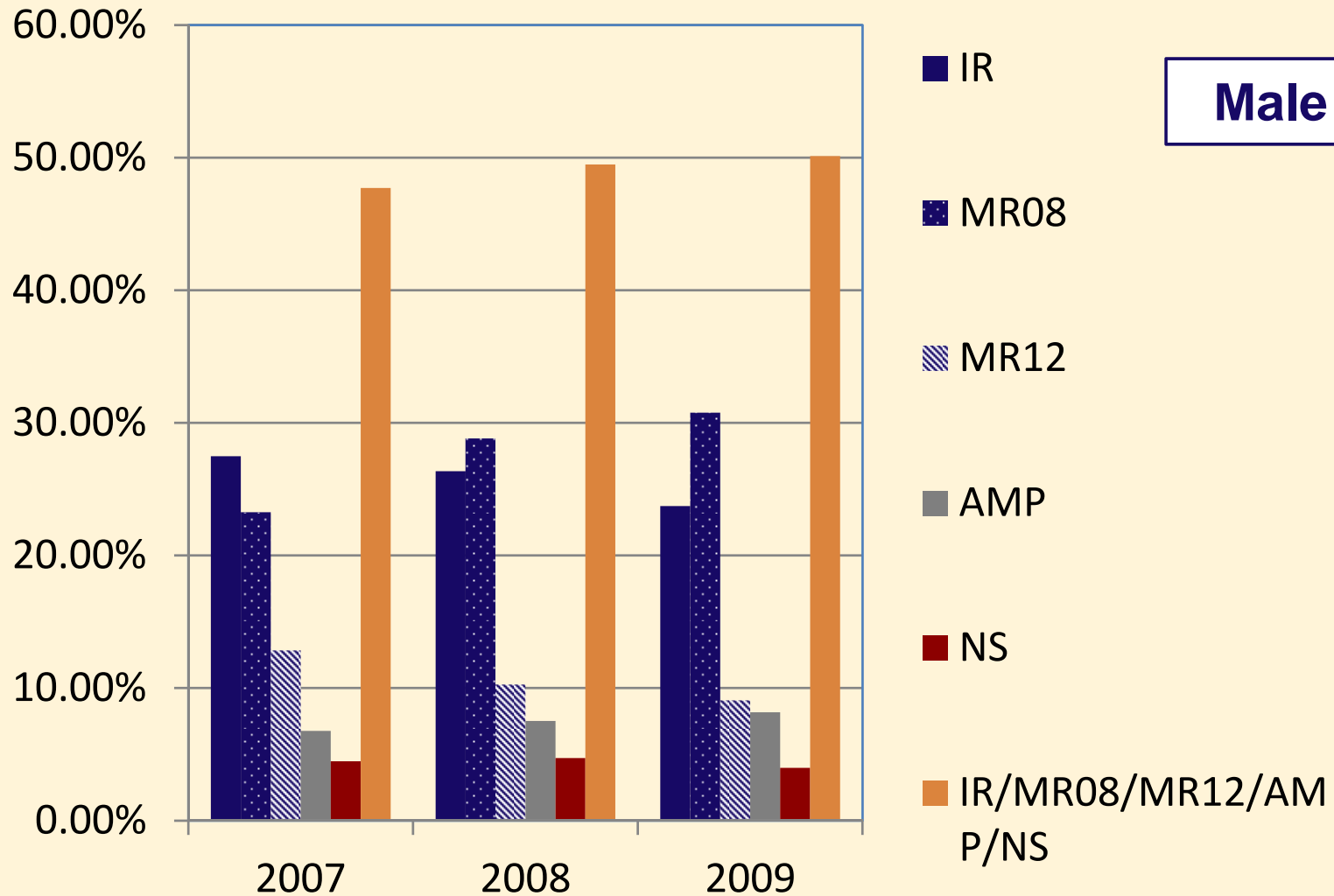
Drug Therapy for Patients with “Confirmed” ADHD Diagnosis



ADHD IN NORDBADEN

Therapeutic Management of Patients with ADHD

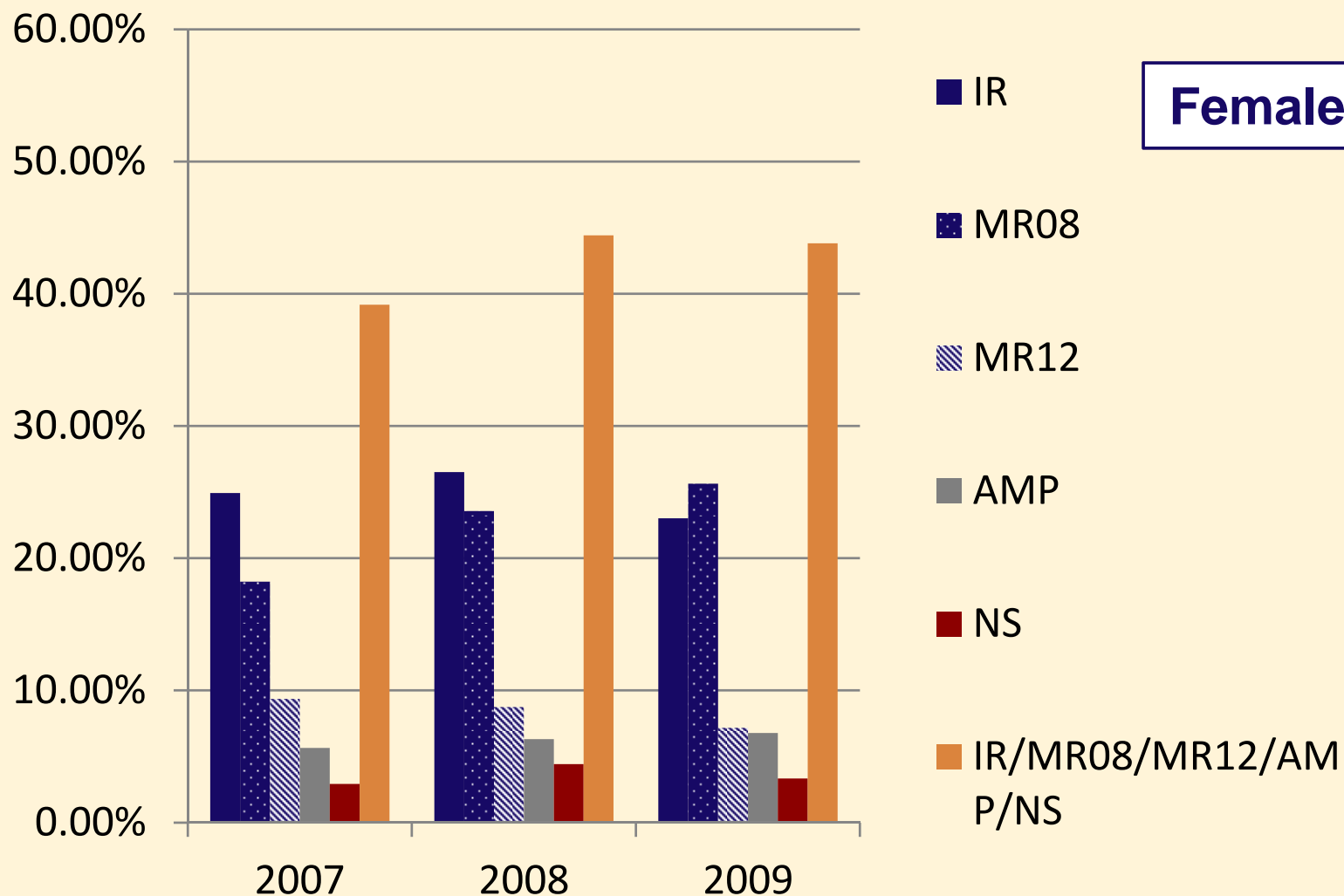
Drug Therapy for Patients with “Confirmed” ADHD Diagnosis



ADHD IN NORDBADEN

Therapeutic Management of Patients with ADHD

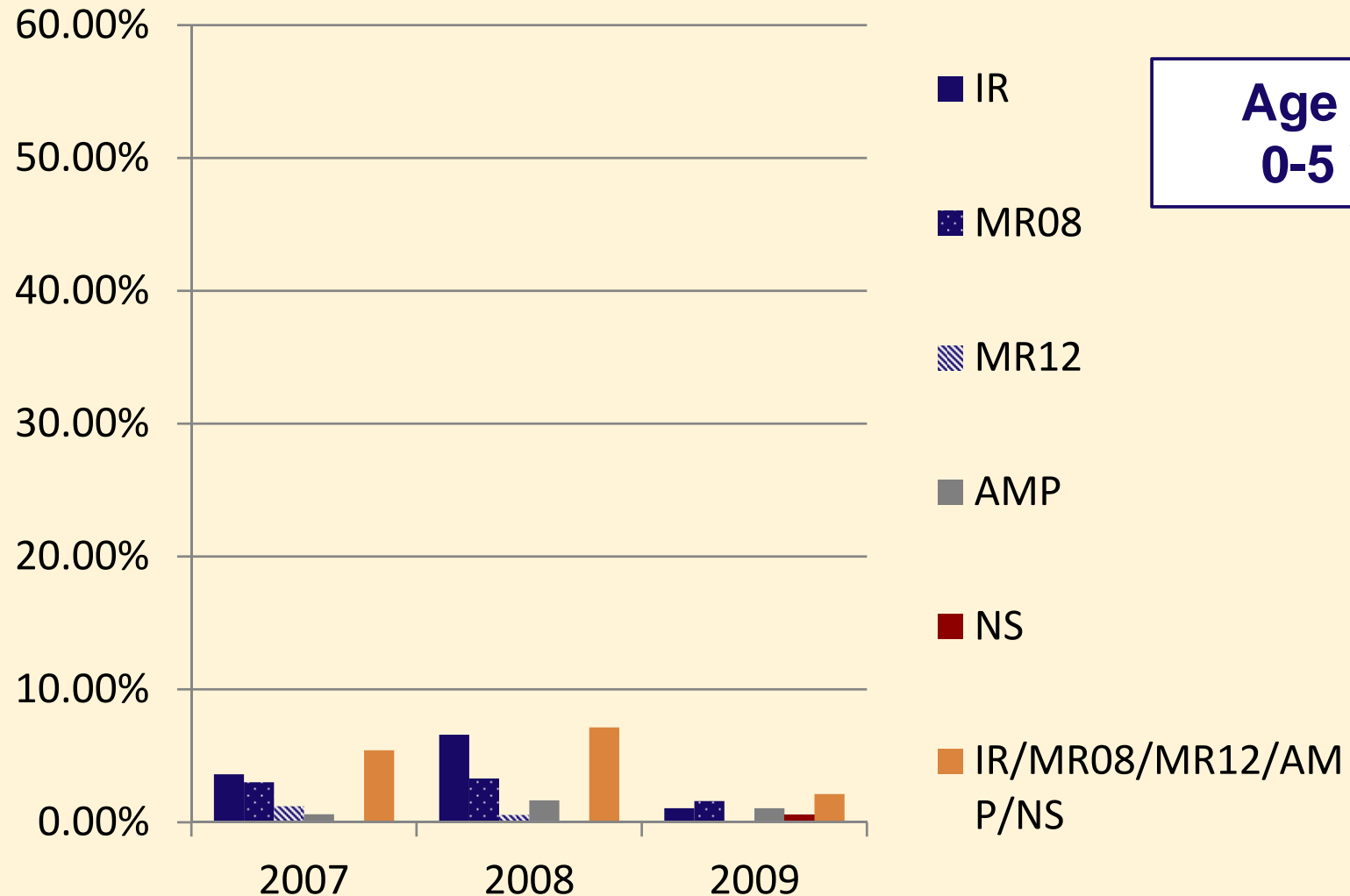
Drug Therapy for Patients with “Confirmed” ADHD Diagnosis



ADHD IN NORDBADEN

Therapeutic Management of Patients with ADHD

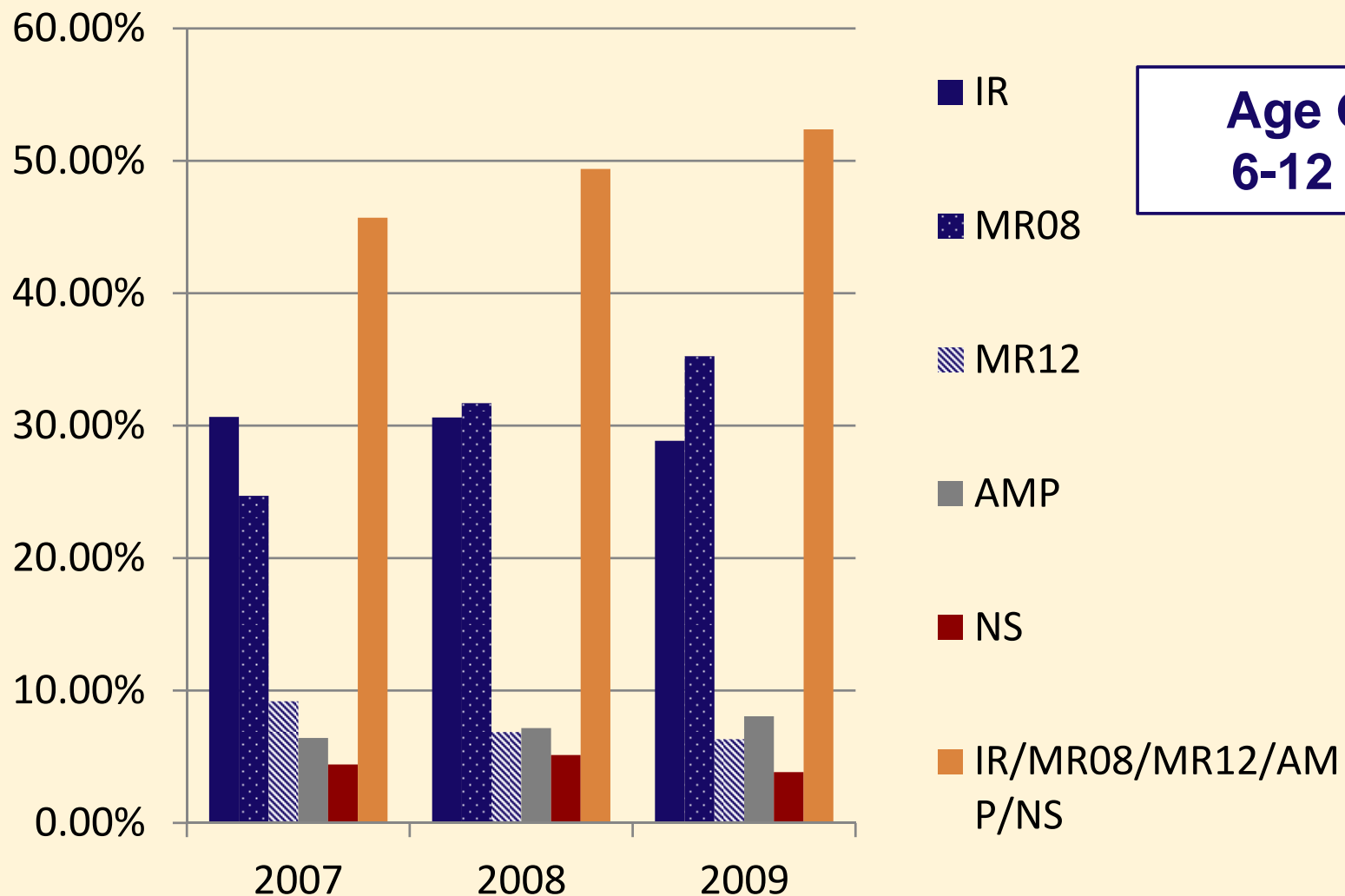
Drug Therapy for Patients with “Confirmed” ADHD Diagnosis



ADHD IN NORDBADEN

Therapeutic Management of Patients with ADHD

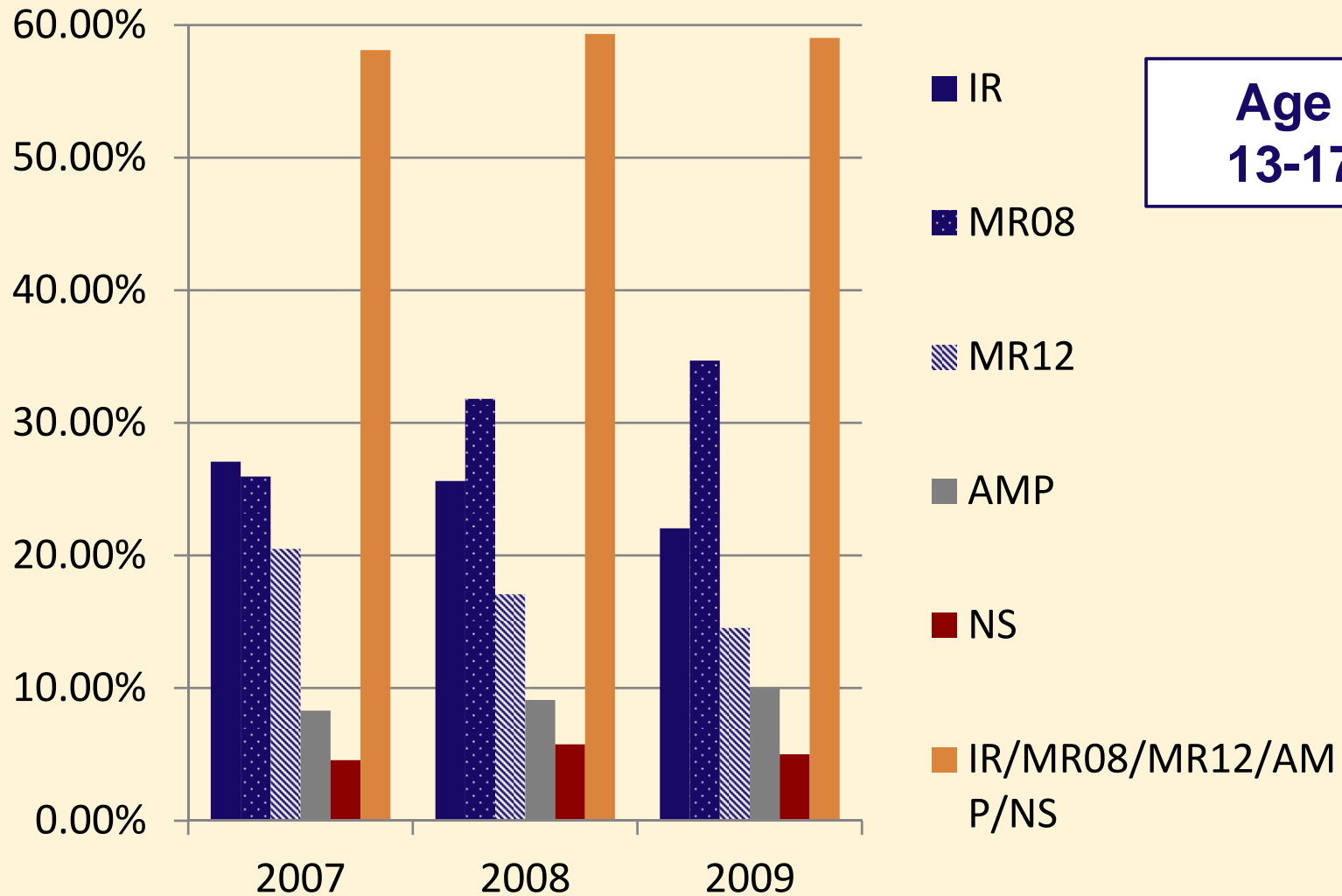
Drug Therapy for Patients with “Confirmed” ADHD Diagnosis



ADHD IN NORDBADEN

Therapeutic Management of Patients with ADHD

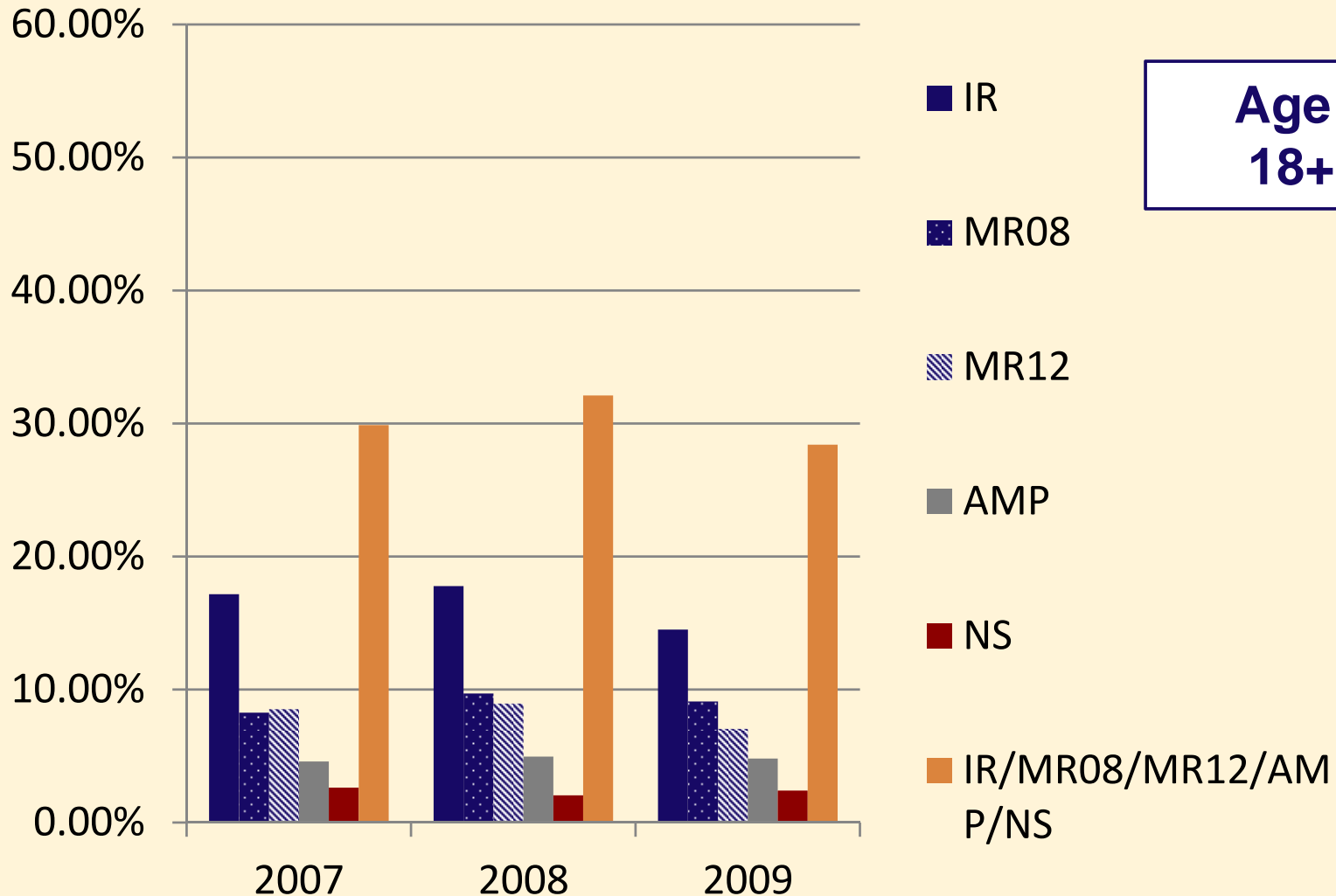
Drug Therapy for Patients with “Confirmed” ADHD Diagnosis



ADHD IN NORDBADEN

Therapeutic Management of Patients with ADHD

Drug Therapy for Patients with “Confirmed” ADHD Diagnosis



Some Key Observations for Discussion

- **Prevalence** of ADHD pharmacotreatment has been rising at an even faster pace than the (administrative) diagnosis rates, even though this trend appears to have slowed down somewhat since 2010.
- In particular in **adolescents** (but not in **preschoolers**), pharmacotreatment is often initiated very soon after first diagnosis, and discontinued or changed after relatively short periods of time.
- Except for preschoolers and adults, prescriber analyses suggest a dominant **role of pediatricians** in medication management.
- Analyses based upon administrative data from Nordbaden provide **no direct evidence of medication overuse**.
- The **limitations** of administrative database analyses should be taken into account when interpreting the data presented.
- The non-inclusion of [health-related] **economic aspects** by the German ADHD network is a weakness, at least in the long run.

Contact:

on behalf of the Study Team:

Prof. Michael Schlander, M.D., Ph.D., M.B.A.
Prof. Oliver Schwarz, Ph.D., M.Sc.

www.innoval-hc.com
michael.schlander@medma.uni-heidelberg.de
michael.schlander@innoval-hc.com
oliver.schwarz@innoval-hc.com

Address

InnoVal^{HC}
Institute for Innovation & Valuation in Health Care
An der Ringkirche 4
D-65197 Wiesbaden / Germany

